



ENVIRONMENTAL MONITORING

- of Medicine, Research samples and Food and Beverages at Bispebjerg and Frederiksberg Hospital via Wi-Fi RTLS.

INSTALLATION

- Covering approximately 800 cooling units storing materials used in relation to patient care, research and clinical trials.
- 200-300 users



WHY MONITORING ?

- Choosing Wi-Fi RTLS Technology.
- Improving quality in monitoring and reporting.
- Automation and reduction of manual labour.
- Reducing loss of medicine and research specimen.



CHOOSING WI-FI RTLS

- Choosing Wi-Fi RTLS Technology.
 - No cabling - Cheap and flexible solution.
 - Equipment and people moves constantly at hospitals.
 - Possibility to track persons and assets via Wi-Fi.

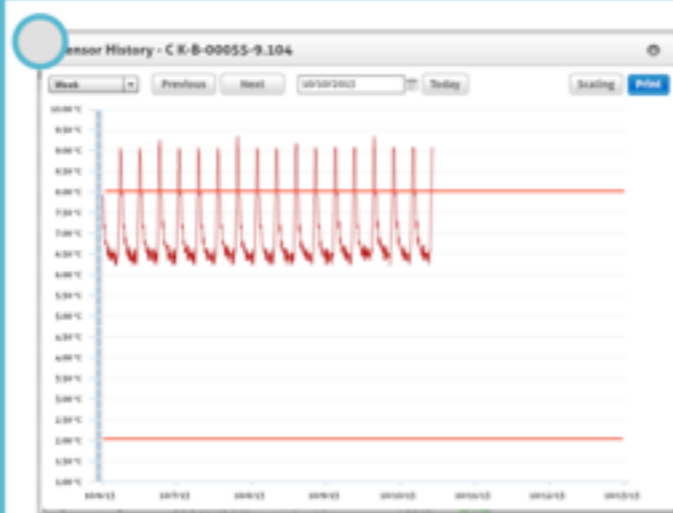


IMPROVING QUALITY

- Patient safety - what measures are taken for ensuring proper storage environments for food / medicine given to our patients ?
- A central standard solution which greatly increases amount of logged temperatures.
- On-going health check - a tool for visualising data by using 'graph only' reports for trending patterns, identifying broken or badly configured equipment.



Indstilling af køleenheder: De 4 typiske problemer



Temperaturen skal justeres ned på et køleskab med automatisk afrimning.



Et køleskab kan ikke justeres på plads og bør udskiftes.



Temperaturen skal justeres ned på et køleskab, der er helt uden for grænseværdierne.



Temperaturen skal justeres op på en fryser, der er helt uden for grænseværdierne.

Den korrekt indstillede køleenhed

En køleenhed skal indstilles så den aldrig overskrider grænseværdierne.

Overskrider køleenheden grænseværdierne får du en alarm, så det er vigtigt at enhederne ikke unødigt overskrider værdierne og giver falske alarmer.



Korrekt indstillet fryser



Korrekt indstillet køleskab

AUTOMATION

- Remove redundant manual work-processes via automation.
 - Daily logging.
 - Automated delivery of reports via e-mail for accreditation.
- Data needs to be accessible 2, 5 or 15 years.
- Alarming - sends a message to local staff so precautions can be taken before materials needs to be disposed.

LOSS REDUCTION

- Enormous sums are invested in research and medicine which is kept in storage on equipment that by default will break in time.
 - Loss of expensive medicine (e.g. diabetes medicine).
 - Loss of decades of work when loosing tissue samples.

ORGANISATIONAL IMPACT

- Decentralising responsibility.
- Different needs > different approach.
- Every system requires new procedures.



Q&A ?



-
- Does the monitoring solution integrate with other systems ?
 -